



RS SERIES REACH STACKERS

Loaded Container Handler Models: RS-9968C/ RS-9975C/ RS-9977R

RS Series Reach Stacker

RS-9968C/ RS-9975C / RS-9977R



- Cummins Tier compliant electronic 4-cycle turbocharged diesel
- 4-speed fully reversing, modulated, powershift transmission
- Rugged all-welded chassis and frame
- Center mounted cab with skyview window
- Large capacity hydraulic tank
- Deaeration tanks optimize engine cooling; coolant levels can be checked from ground level
- Rear visibility aid camera system
- Electronic control of machine is based on CANBUS technology
- Meets proposed ANSI B56.1 standard

Operator Station

The center mounted, cab, with sky view window, can be manually moved 110.2" (2800mm) to access components. Ergonomic features include tinted and laminated front windshield (all other glass areas in the cabs are tinted safety glass), electric front, rear, and top wipers, heater/defrosters with front and side window defrosting. The adjustable, air suspension seats are equipped with flip-down, angled arm rests and operator seat belts. Controls are conveniently located for maximum operator efficiency, comfort, and control. All wiring is color coded. All models have 24-volt electrical systems. A rear visibility-aid camera system, a load moment indicator system, an attachment diagnostic board, and air conditioning are standard.

Standard Engine

A Tier compliant Cummins 330 (231kW) horsepower, 4-cycle, turbocharged, after cooled, diesel engine is standard on all models. CANBUS technology allows clear communication for machine diagnostics, and allows remote access with GSM modem access.

Transmission

The four-speed, fully reversing, modulated, powershift transmission has an Automatic Powershift Control feature, declutching, and electric shift control. The filler pipe dip stick and large, heavy-duty oil filter are easily accessible. Warning lights and audible alarms are activated if an unsafe condition exists. Separate coolant-to-oil cooler. Integrally built torque converter has constant-mesh gear sets actuated by hydraulic clutch packs.

Drive Axle

The planetary drive axles are high-stability, wide stance design; the housings are bolted to the truck frame.

Steer Axle

The single-cylinder design steer axle has tapered wheel bearings; fully sealed and never needs adjusting. The axle is equipped with rubber shock absorbers.

Hydraulic System

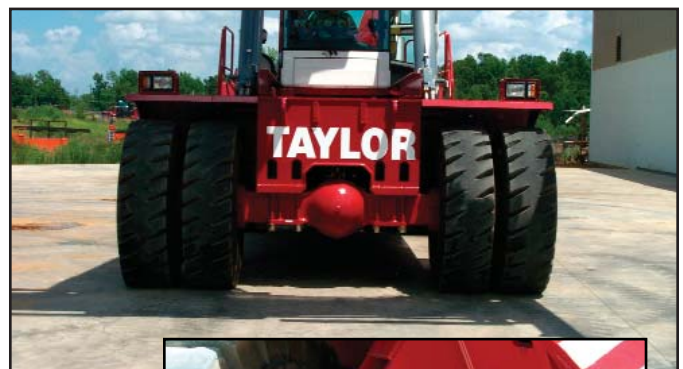
The 166-gallon capacity hydraulic tank has tank breather, return line filters, with replaceable elements in tank, and an external site gauge. An air-to-oil cooler separate from the transmission cooler, cools the hydraulic system oil (and service brakes). The variable displacement type pumps are converter driven. The system has load sensing with proportional distribution controls for boom lift and extension; dual, double-acting lift cylinders are pinned to the boom and must be powered down, providing additionally safety when lowering boom; Boom lift/extend functions are hydraulic over hydraulic; all other functions are electric over hydraulic. Valves are controlled by a conveniently located, multifunctional "joystick" control lever.

Power Steering

Hydrostatic steering, with a priority valve system, provides constant response at all engine speeds.

Chassis

The all-welded frame has integral, contoured, bolt-on counterweights. Hinged doors and bolt-out covers allow easy access to all service points.





Attachment

The telescopic boom is high strength steel. The expandable attachment has standard ISO twistlocks for 20-ft. (6.1m) and 40-ft. (12.2m) positions. The hydraulic motor and gear reduction system permit clock-wise and counter-clock-wise attachment rotation. The attachment has sideshift, manual pile slope capabilities, and adjustable guide arms. Electrical safety sensors prevent twistlocks from being locked or unlocked while the attachment is “unseated” and prevent attachment extension or retraction when twistlocks are “locked” or “seated”; a twistlock safety interlocking system ensures correct locking procedure. Signal lights are amber, green, and red. Two work lights are standard.

Electrical System

Electric/electronic control of the machine is based on CANBUS technology. Instrument panel prewired to accommodate heavy duty accessories; all wiring is number coated. 24-volt electrical system, key-type anti-restart ignition system, two 200-amp-hour batteries, 100-amp alternator, main battery disconnect switch, indicator lights, thermal reset circuit breakers and back-lighted instruments are standard. Ten work lights: 4 on boom (2 on each side of outer boom), 4 on chassis (1 on of each side of counter-weight), 2 on front of chassis (one on each side at front fenders), 2 on attachment (1 on each end to illuminate rear twistlock housing). Tail lights, stop lights, turn signal lights, electrical horn and tilt steering are standard. A rear visibility aid camera system, a load moment indicator system, a diagnostic board for attachment, and air conditioning are standard.



Brake System

Internal force-cooled, hydraulic-actuated, wet disc, service brakes (and hydraulic oil) are cooled by a cooler separate from the transmission cooler. They drive-axle mounted disc brake is spring applied for braking.



Rated Container Capacities

Model	Wheelbase	1st Row/3-High*	1st Row/4-High*	1st Row/5-High*	2nd Rail/2-High*
RS-9968C	256-in. (6,500 mm)	99,000-lbs/45t	97,000-lbs/44t	88,200-lbs/40t	—
RS-9975C	256-in. (6,500 mm)	99,000-lbs/45t	97,000-lbs/44t	88,200-lbs/40t	—
RS-9977R	295-in. (7,500 mm)	99,000-lbs/45t	99,000-lbs/45t	99,000-lbs/45t	77,100-lbs/35t**

Note: Components are subject to change without notice.

*9.5-ft. (2.9m) containers

** Stabilizers down



After Market Support

"You Can Depend On Big Red" is a personal and collective commitment from the Taylor "Big Red" Team to every customer. Customer needs and expectations are priorities for Taylor engineering, manufacturing, marketing, and service organizations. Sudden Service, Inc. and our worldwide Taylor dealer network are ready to respond to your requests for support requirements twenty-four hours a day, seven days a week!

Warranty - 12 month or 2,000 hours parts and labor. Optional warranties are available.



Standard Equipment List

Cummins QSM11-330 HP Turbocharged Diesel Engine • CANBUS Technology • 119 Gallon Capacity Fuel Tank • Lockable Fuel Cap with Strainer • 2-stage Heavy-Duty, Dry Type Air Cleaner w/Safety Element and Restriction Indicator • Muffler w/Stack Guard • 24-Volt Electrical System w/100-Amp. Alternator, Reset Circuit Breakers • Two 200-Amp Batteries • Back-lighted Instruments • Electric Horn • Anti-restart Ignition System • Tilt Steering • Forward Alarm • Rear View Mirrors • Keyswitch-actuated Amber Strobe Light • Reverse-actuated Backup Alarm • Transmission - Powershift, four-speed fully reversing, Modulated w/Electric Shift Controls • Single-Cylinder Steer Axle • Planetary Drive Axle • Internal Force-Cooled, Hydraulic-Actuated, Wet Disc Service Brakes, w/Spring Applied Parking Brake • Hydrostatic Power Steering • See Model Specification Sheet for Standard Tires • Air Conditioned, Center Mount Operator Station w/Overhead Guard and Tinted Skyview Window • Load Sensing Operator Controls • Adjustable Air Suspension Seat w/Flip Down, Adjustable Angle Arm Rest and Seat Belt • Multifunctional Joystick Control Lever • Rear Visibility Aid Camera System • Load Moment Indicator System • Diagnostic Board for Attachment • Hydraulic over Hydraulic Lift and Boom Extension • 166-Gal. Capacity Hydraulic Tank • Air-to-Oil Cooler Separate from the Transmission Cooler Cools Hydraulic System Oil and Service Brakes • Return Line Filters w/Replaceable Elements in Tank • High Strength Steel Telescopic Boom • ISO Twistlocks for 20-ft. and 40-ft. positions • Hydraulic Motor and Gear Reduction System Permit 95° CCW and 185° CW Attachment Rotation • Attachment has $\pm 31.5^\circ$ Side Shift, and $\pm 3^\circ$ Mechanical Pileslope • Electrical Safety Sensors on Twistlocks • Twistlock Safety Interlocking System • 10 Worklights
(Note: Subject to change without notice.)



TAYLOR MACHINE WORKS, INC.
650 North Church Avenue
Louisville, Mississippi 39339-2017
(662) 773-3421 / Fax (662) 773-9146
www.taylorbigred.com